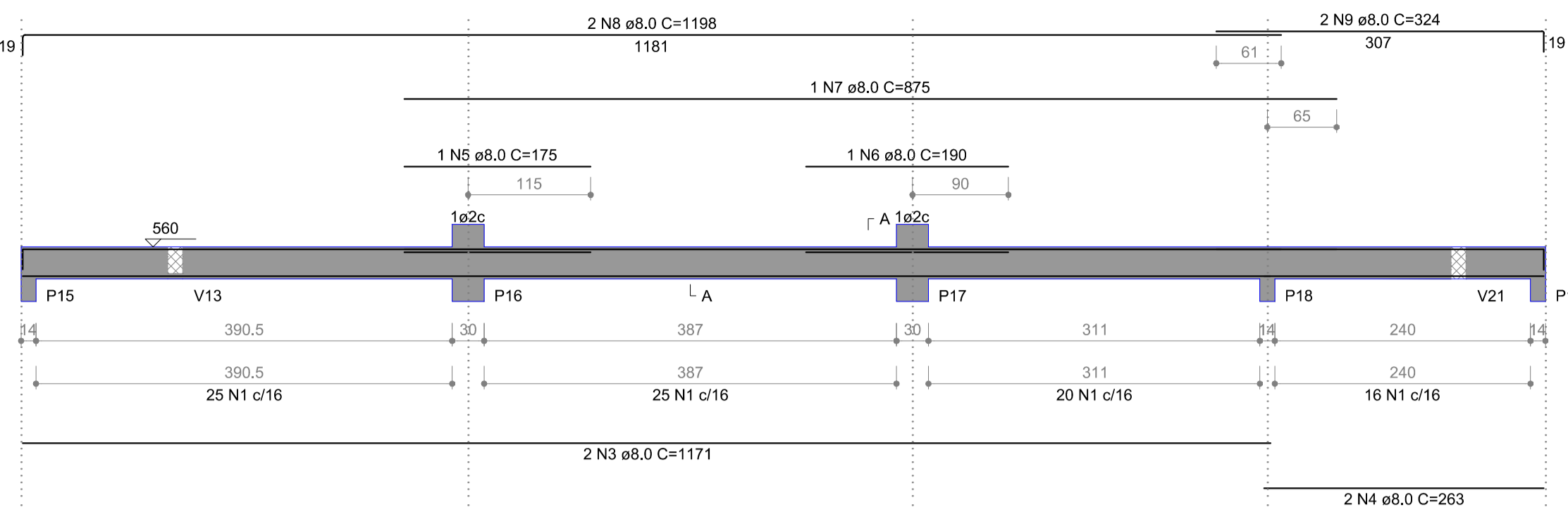
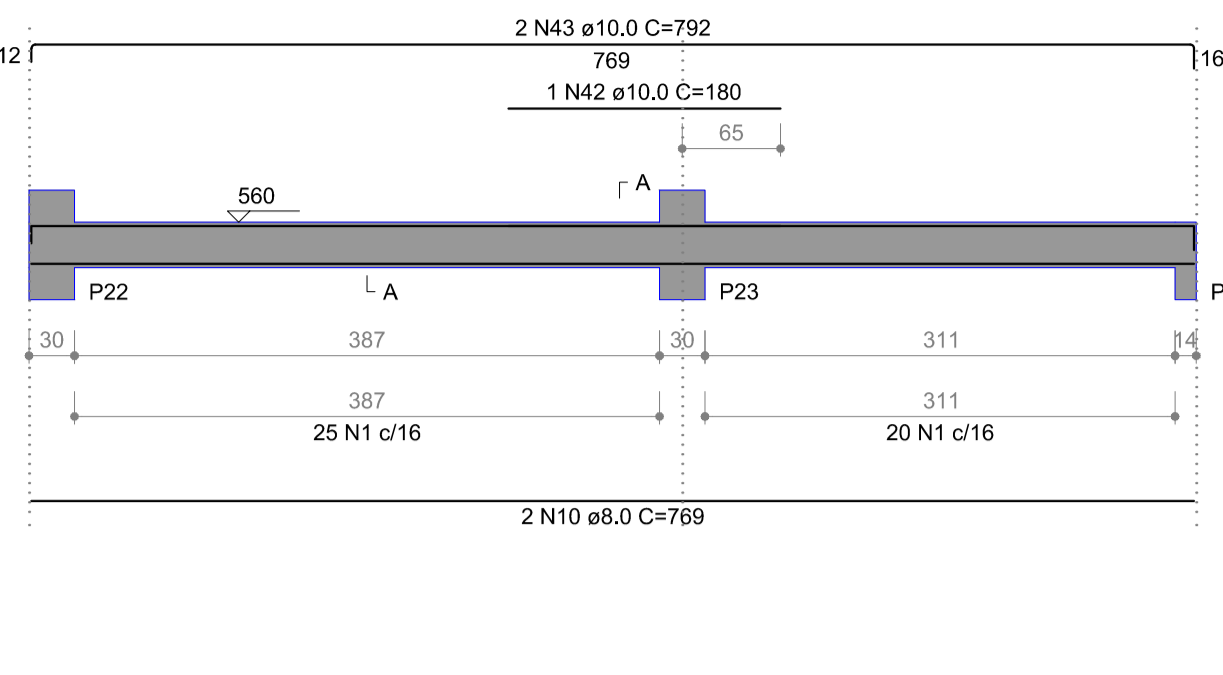


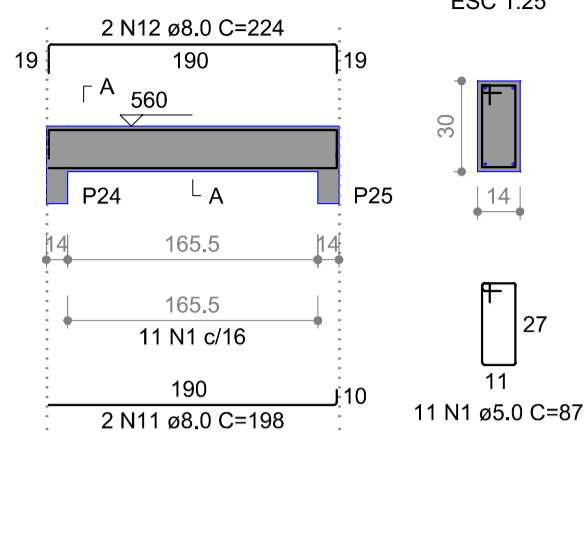
V5
ESC 1:50



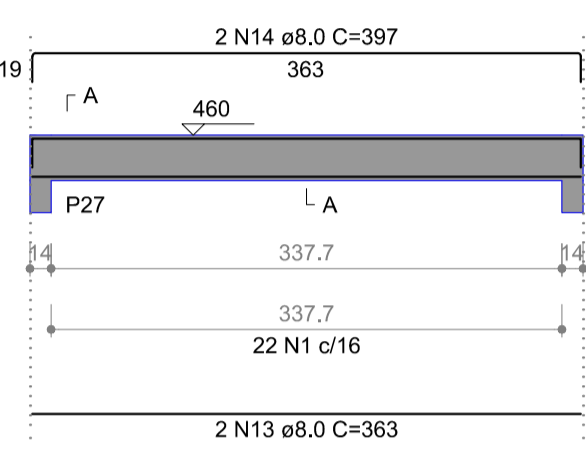
V6
ESC 1:50



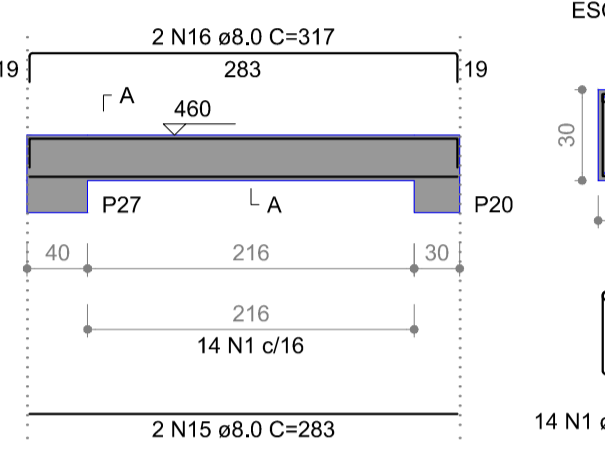
V7
ESC 1:50



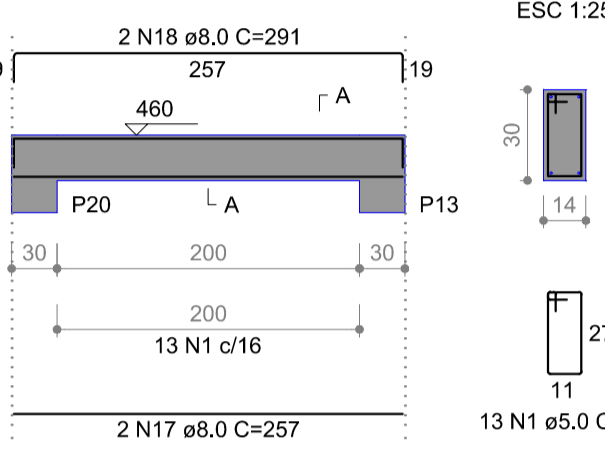
V8
ESC 1:50



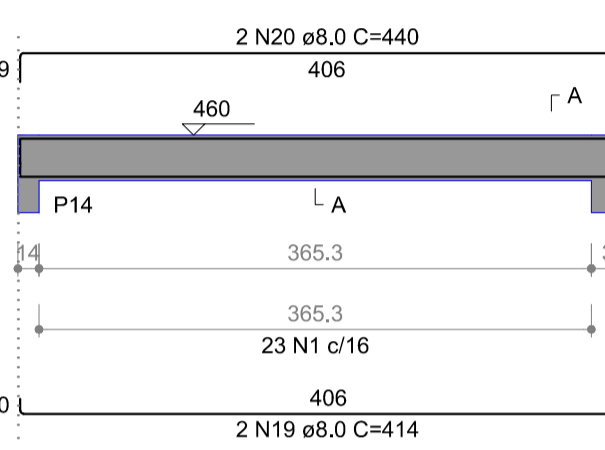
V9
ESC 1:50



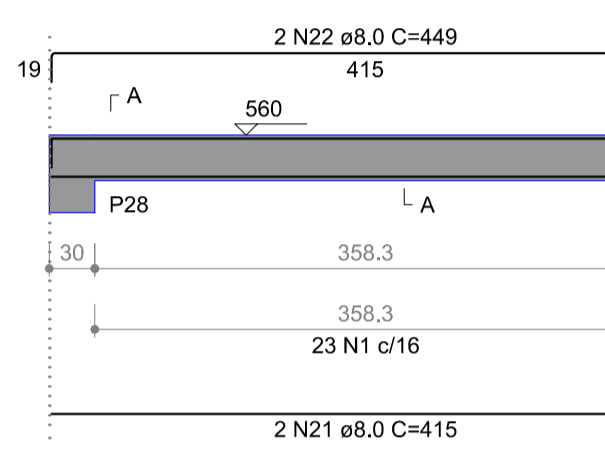
V10
ESC 1:50



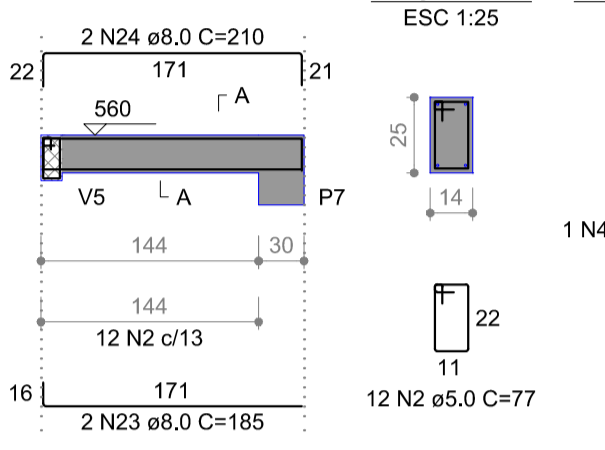
V11
ESC 1:50



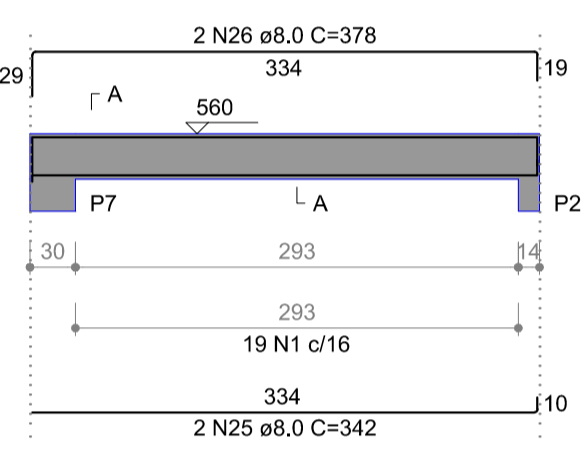
V12
ESC 1:50



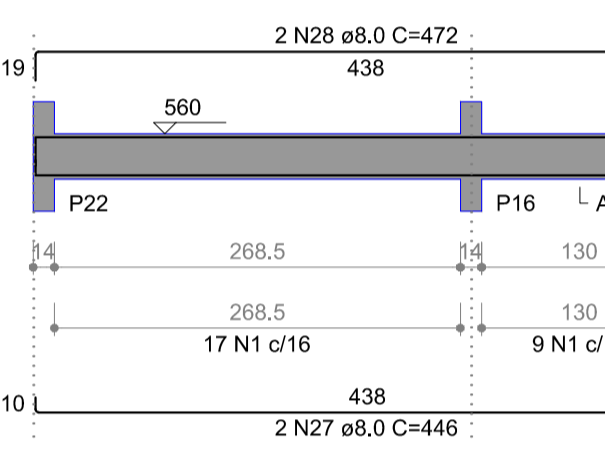
V13
ESC 1:50



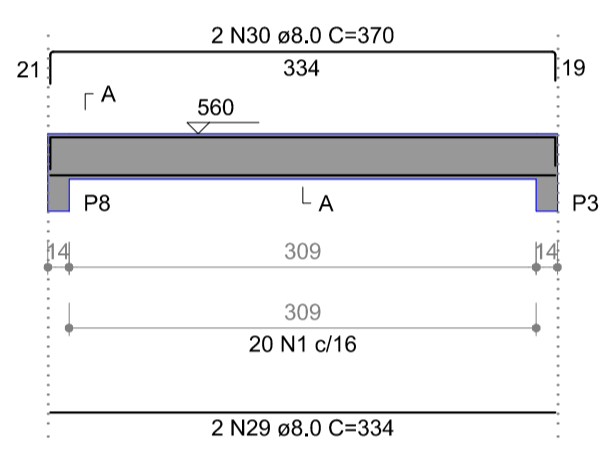
V14
ESC 1:50



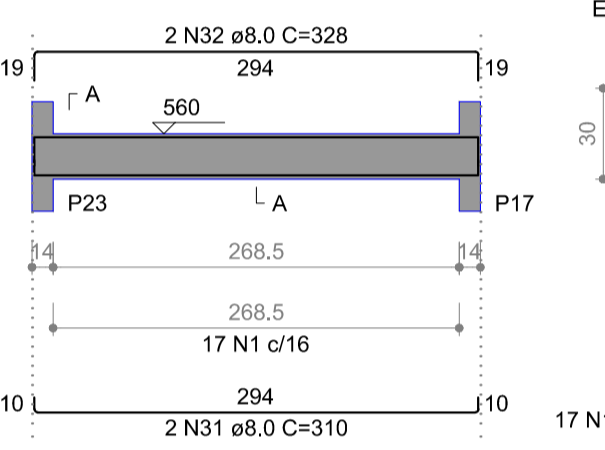
V15
ESC 1:50



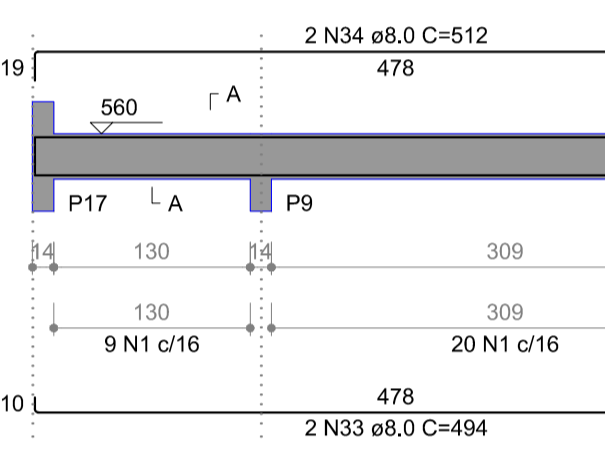
V16
ESC 1:50



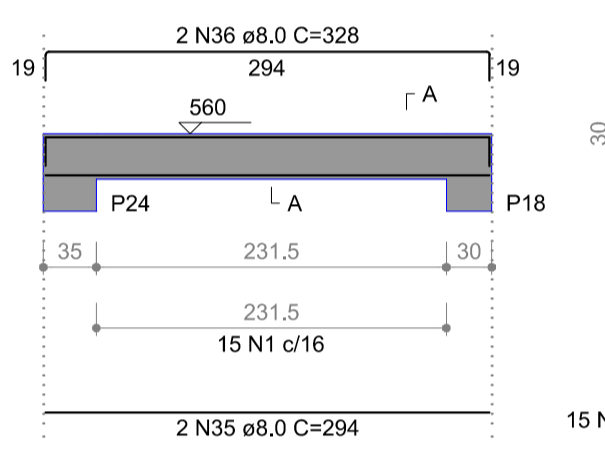
V17
ESC 1:50



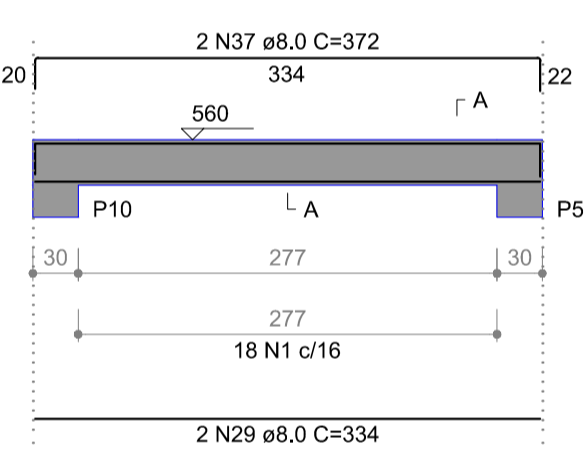
V18
ESC 1:50



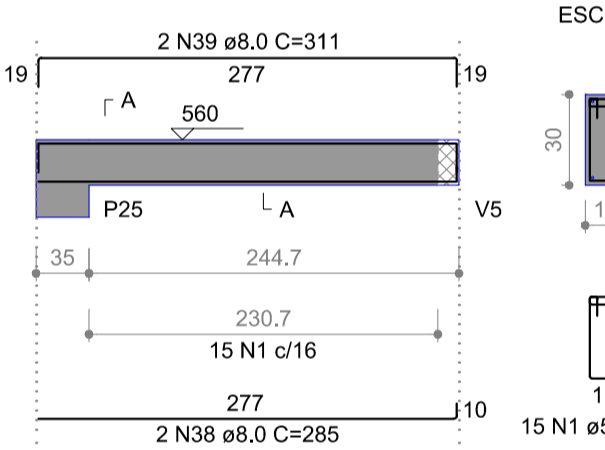
V19
ESC 1:50



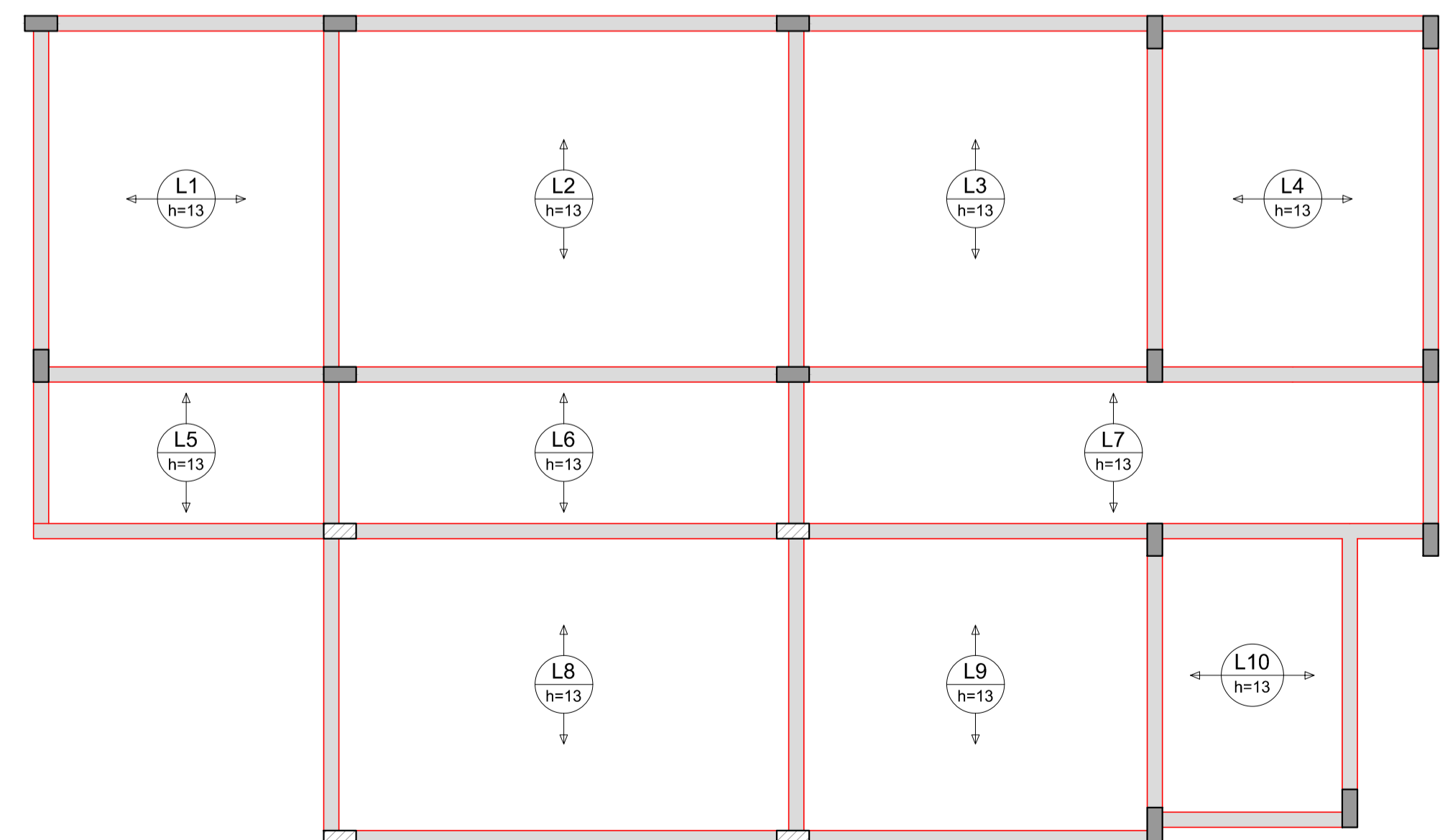
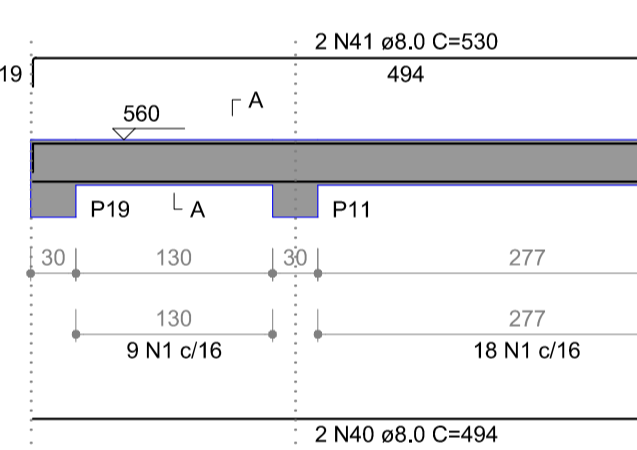
V20
ESC 1:50



V21
ESC 1:50



V22
ESC 1:50



Armação positiva das lajes do pavimento SUPERIOR (Eixo X)
escala 1:50

PROJETO ESTRUTURAL

FL.: 09/11

OBRA: AMPLIAÇÃO DE UNIDADE BÁSICA DE SAÚDE DO BAIRRO BARRA DO AZEITE
LOCAL: RUA JACUPIRANGA, 38 - BARRA DO AZEITE CAJATI - SP
PROP.: PREFEITURA MUNICIPAL DE CAJATI
CNPJ: 64.037.815/0001-28
ESCALAS: INDICADAS



DECLARO QUE A APROVAÇÃO DO PROJETO POR PARTE DA PREFEITURA NÃO IMPLICA NO RECONHECIMENTO DO DIREITO DE PROPRIEDADE DO TERRENO.

PROPRIETÁRIO

ÁREAS (UN. M²)
ÁREA DO TERRENO : 326,72 m²
ÁREA A SER CONSTRUÍDA : 279,53 m²

AUTOR DO PROJETO
NOME : SILVERIO DOMINGUES
CREA : 5061285557
RESP. TÉCNICO - FISCALIZAÇÃO
NOME : SILVERIO DOMINGUES
CREA : 5061285557

ESPAÇO RESERVADO P/ APROVAÇÃO