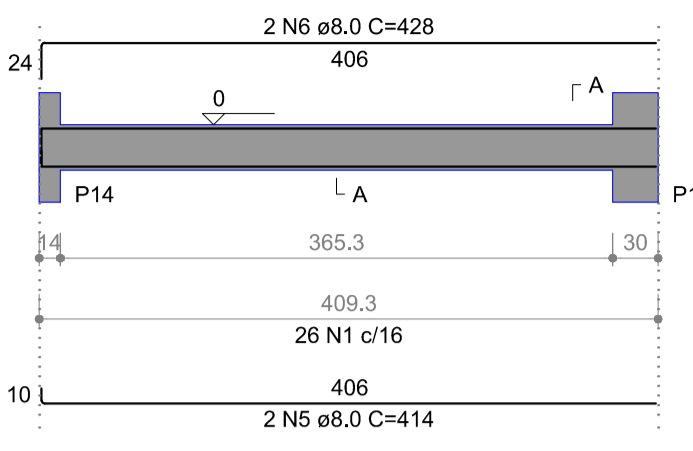
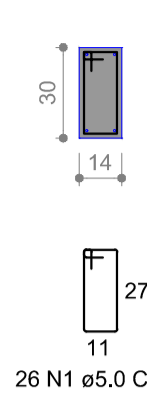


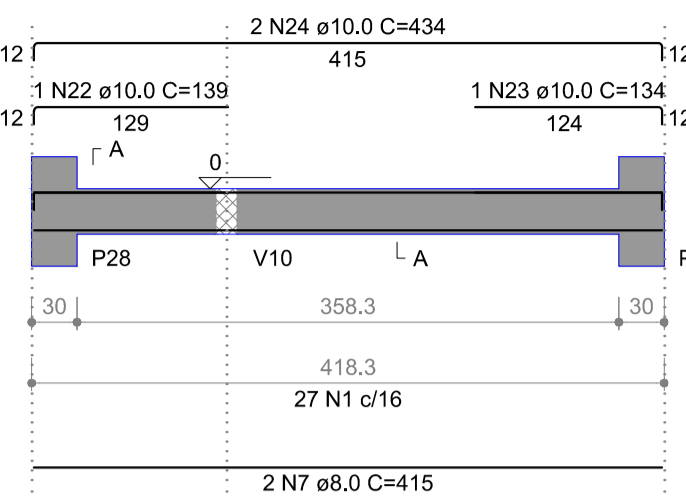
V21
ESC 1:50



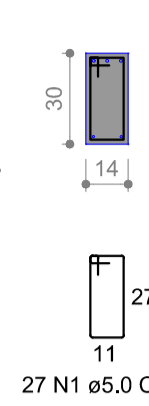
SEÇÃO A-A
ESC 1:25



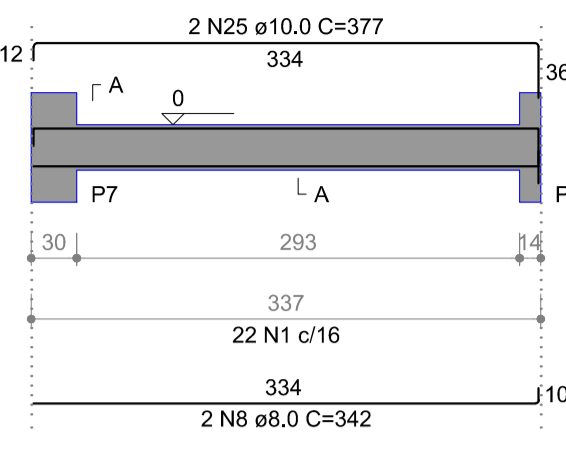
V22
ESC 1:50



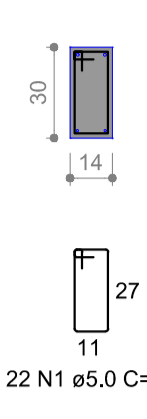
SEÇÃO A-A
ESC 1:25



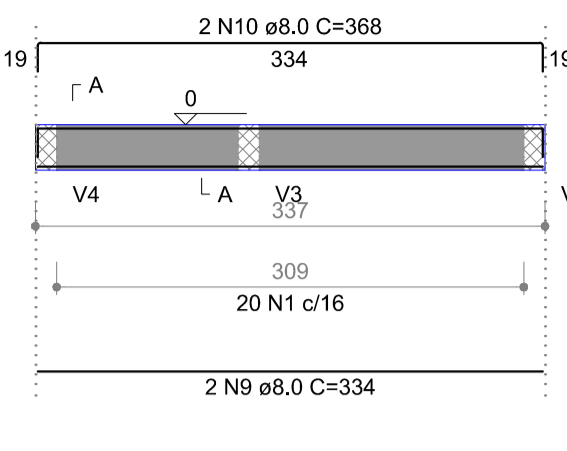
V23
ESC 1:50



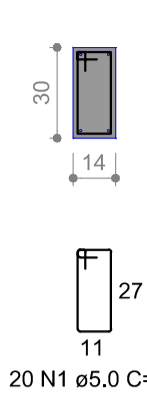
SEÇÃO A-A
ESC 1:25



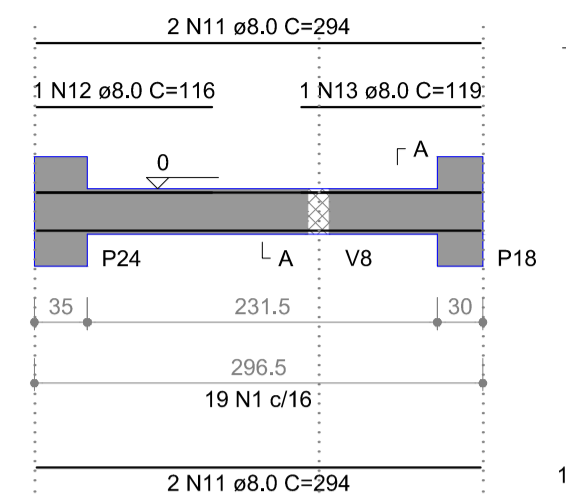
V24
ESC 1:50



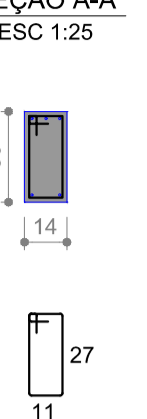
SEÇÃO A-A
ESC 1:25



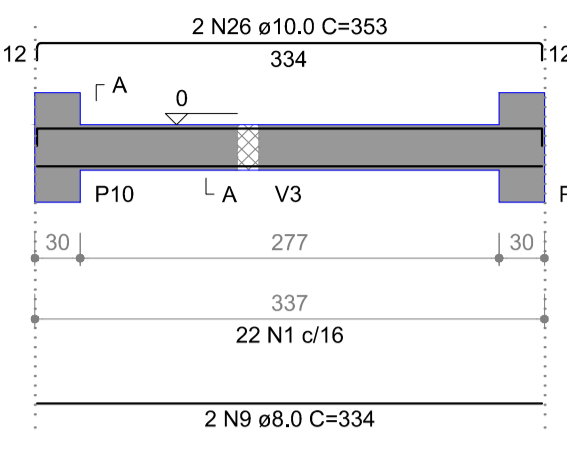
V25
ESC 1:50



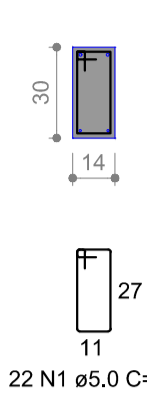
SEÇÃO A-A
ESC 1:25



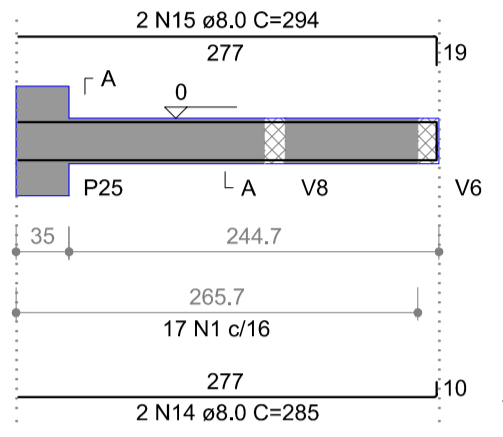
V26
ESC 1:50



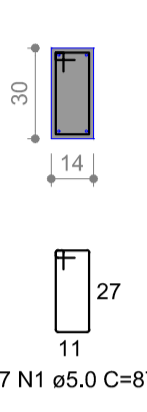
SEÇÃO A-A
ESC 1:25



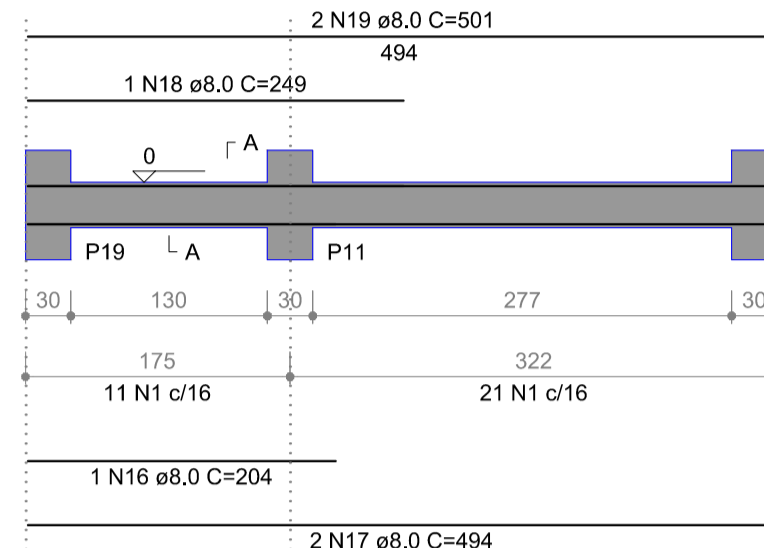
V27
ESC 1:50



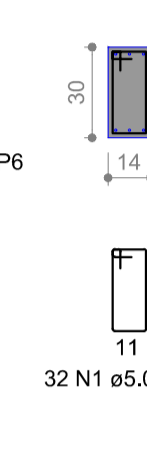
SEÇÃO A-A
ESC 1:25



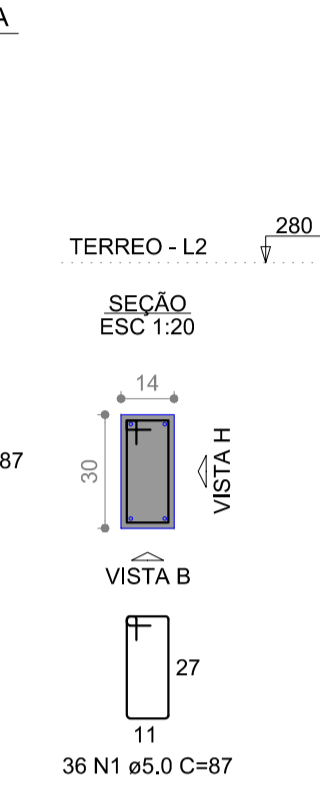
V28
ESC 1:50



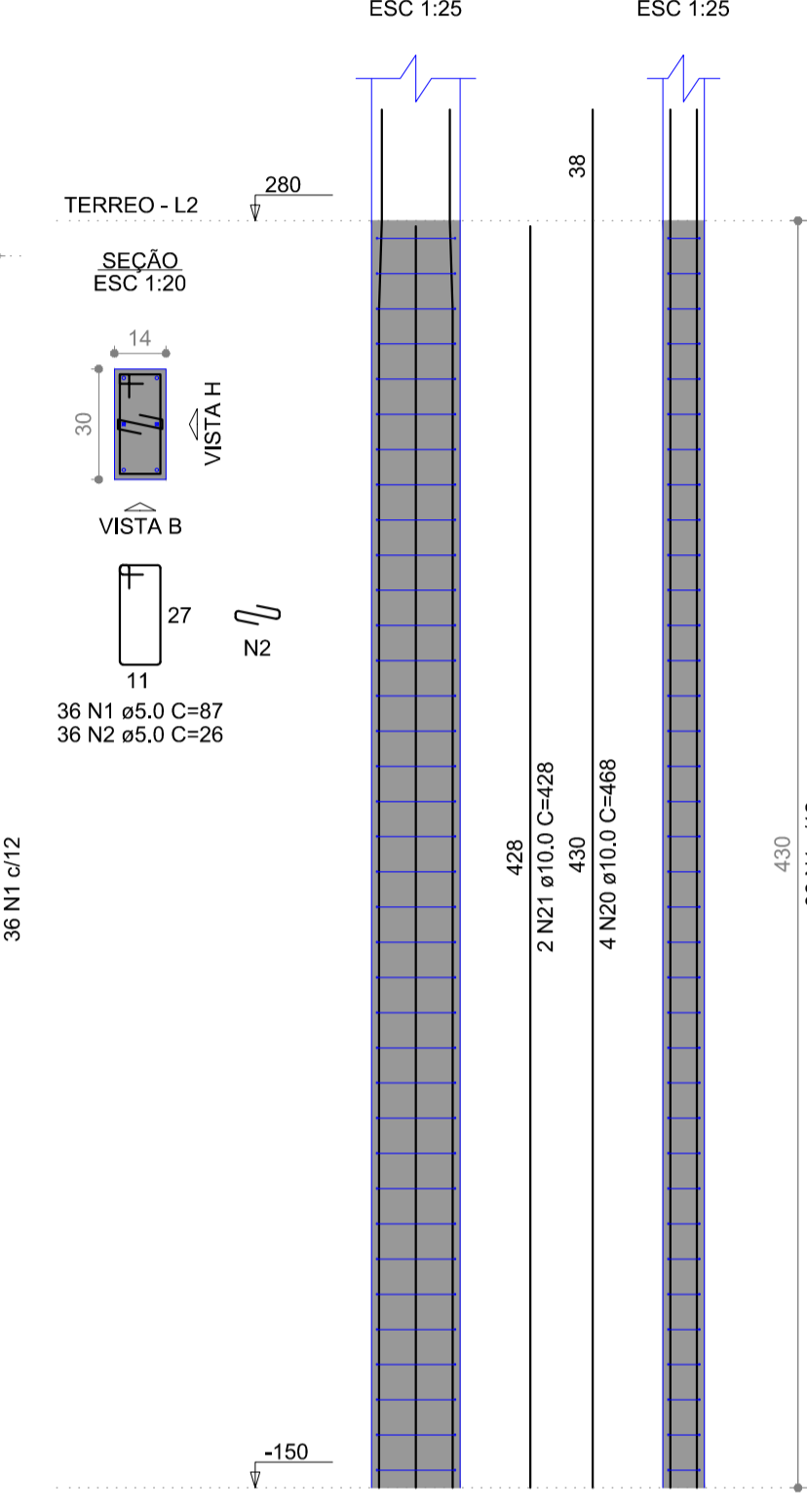
SEÇÃO A-A
ESC 1:25



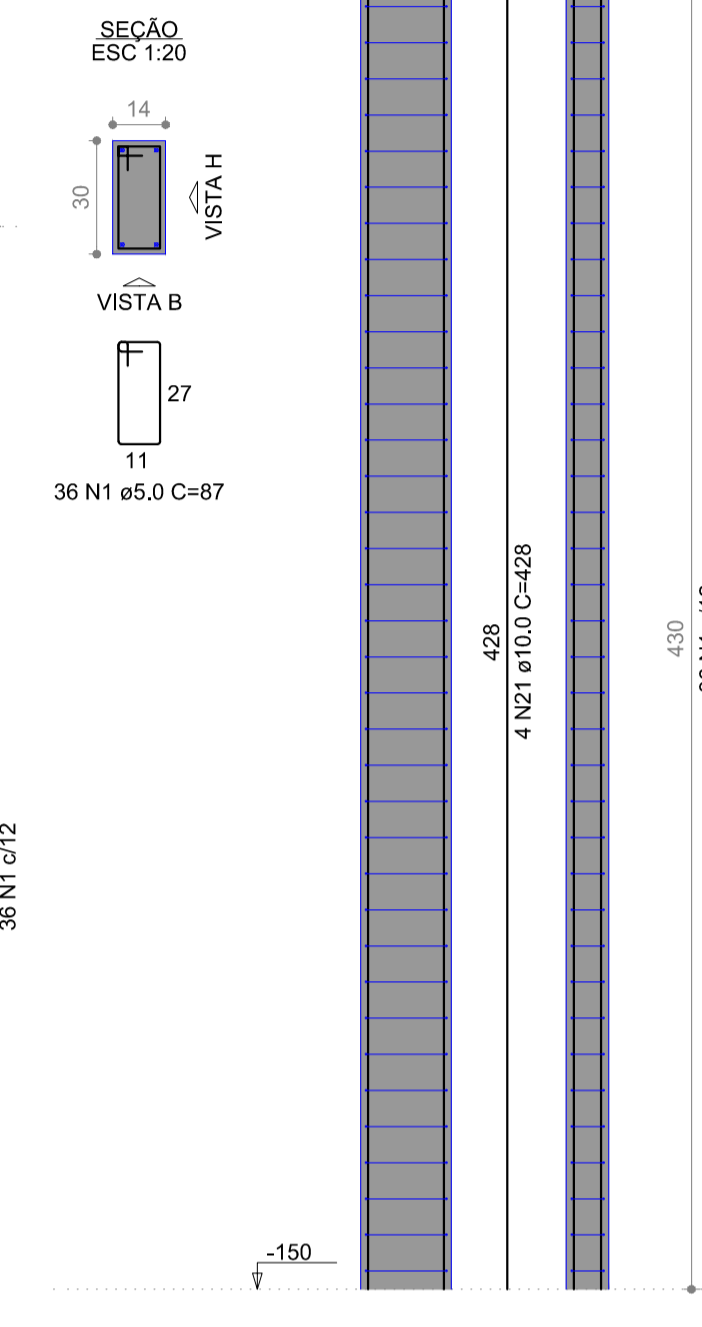
P1=P4=P5=P6=P7=P10=
=P11=P13=P14=P18=
=P19=P20



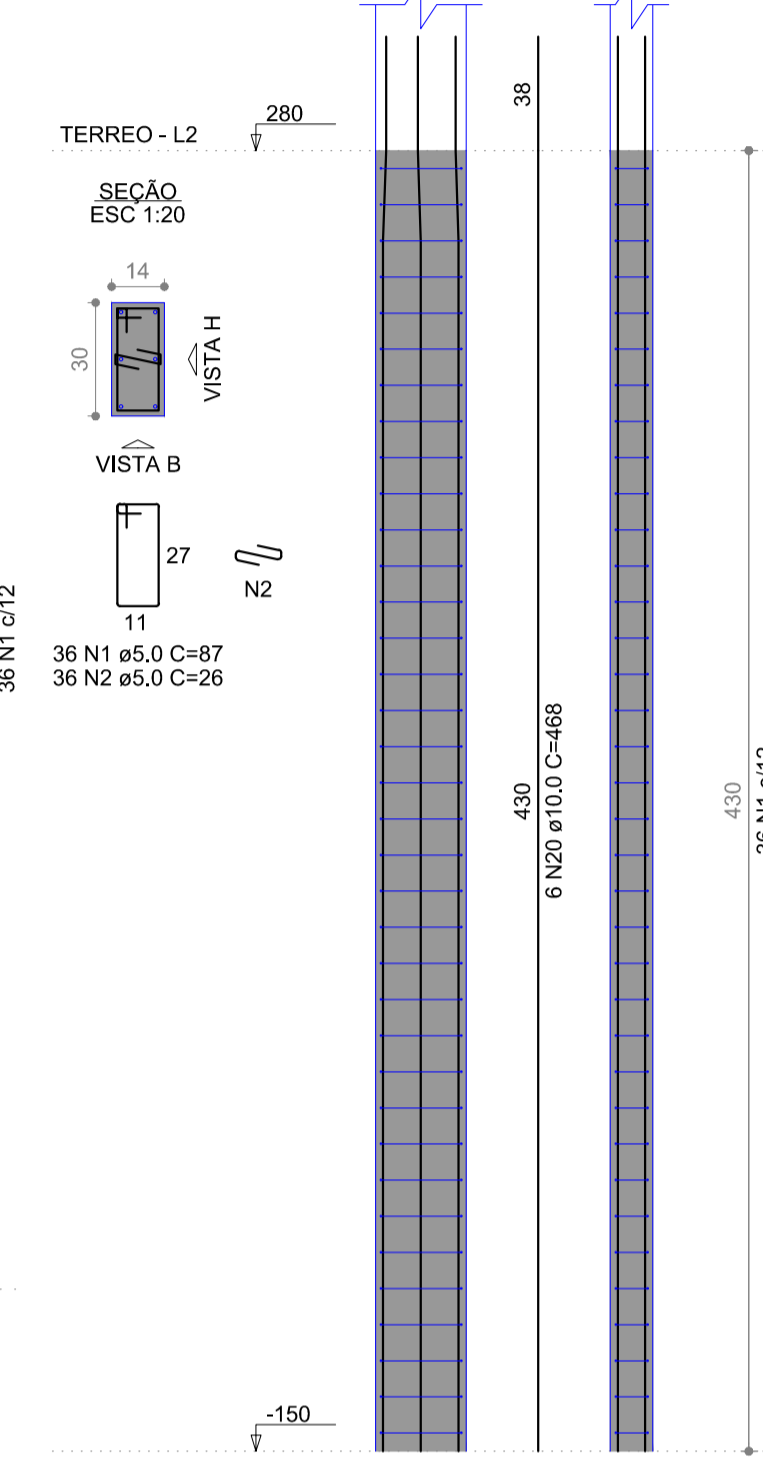
P2=P3=P8=P9=P16=P22=
=P23=P28



P12=P26



P15



RELAÇÃO DO AÇO

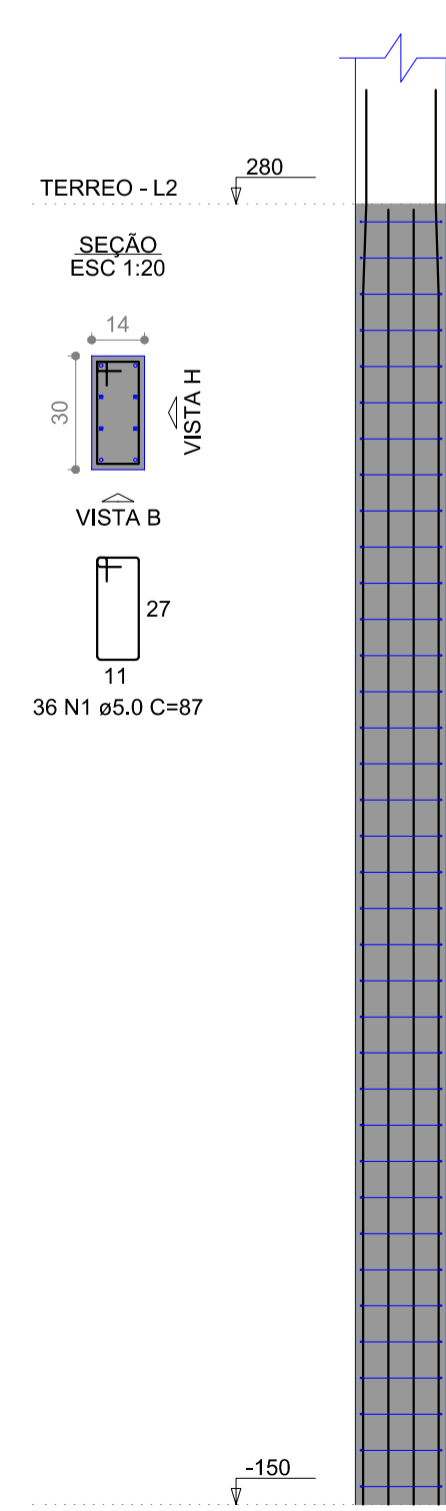
AÇO	N	DIAM (mm)	QUANT	C.UNIT (cm)	C.TOTAL (cm)
CA60	1	5.0	1085	87	94395
	2	5.0	432	26	11232
	3	5.0	72	97	6984
	4	5.0	36	107	3852
CA50	5	8.0	2	414	828
	6	8.0	2	428	856
	7	8.0	2	415	830
	8	8.0	2	342	684
	9	8.0	4	334	1336
	10	8.0	2	368	736
	11	8.0	4	294	1176
	12	8.0	1	116	116
	13	8.0	1	119	119
	14	8.0	2	285	570
	15	8.0	2	294	588
	16	8.0	1	204	204
	17	8.0	2	494	988
	18	8.0	1	249	249
	19	8.0	2	501	1002
	20	10.0	108	468	50544
	21	10.0	36	428	15408
	22	10.0	1	139	139
	23	10.0	1	134	134
	24	10.0	2	434	868
	25	10.0	2	377	754
	26	10.0	2	353	706

RESUMO DO AÇO

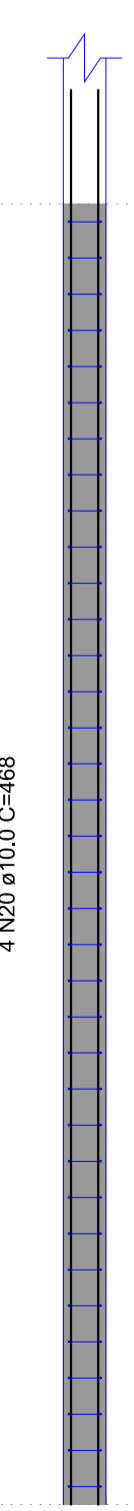
AÇO	DIAM (mm)	C.TOTAL (m)	PESO + 10% (kg)
CA50	8.0	102.8	44.6
CA60	10.0	685.5	464.9
CA60	5.0	1164.6	197.5
PESO TOTAL (kg)			
CA50		509.5	
CA60		197.5	

Volume de concreto (C-25) = 6.40 m³
Área de forma = 129.22 m²

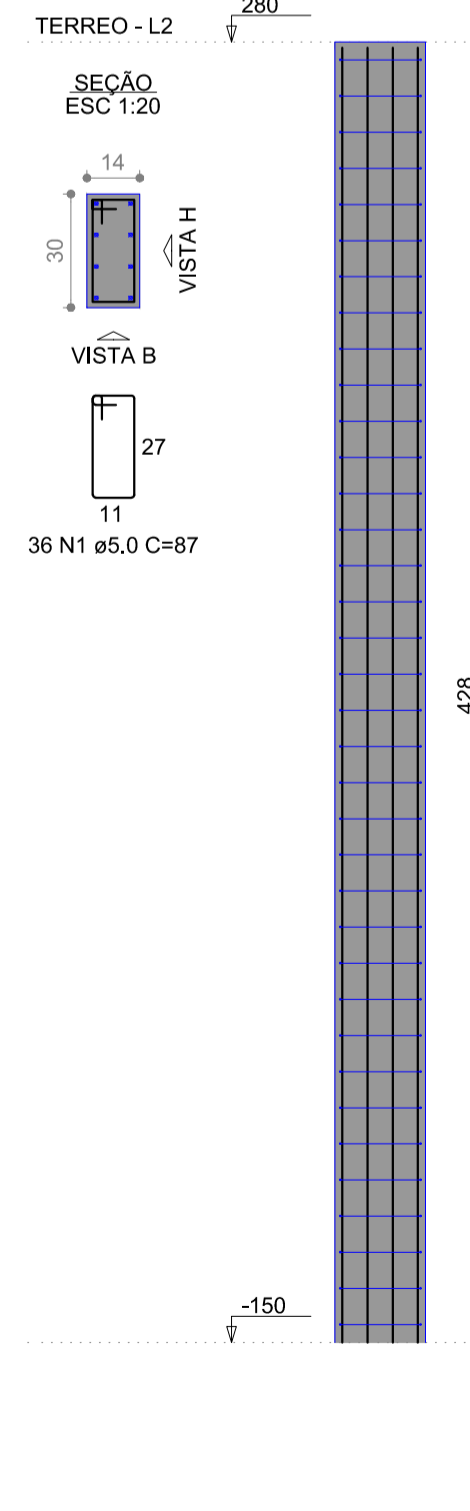
P17



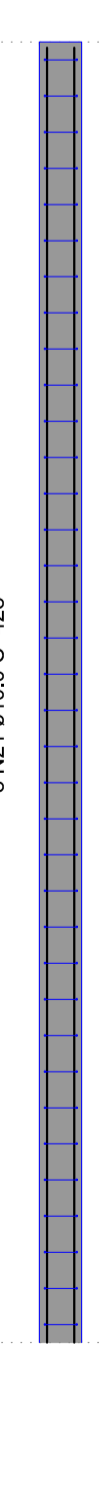
VISTA B
ESC 1:25



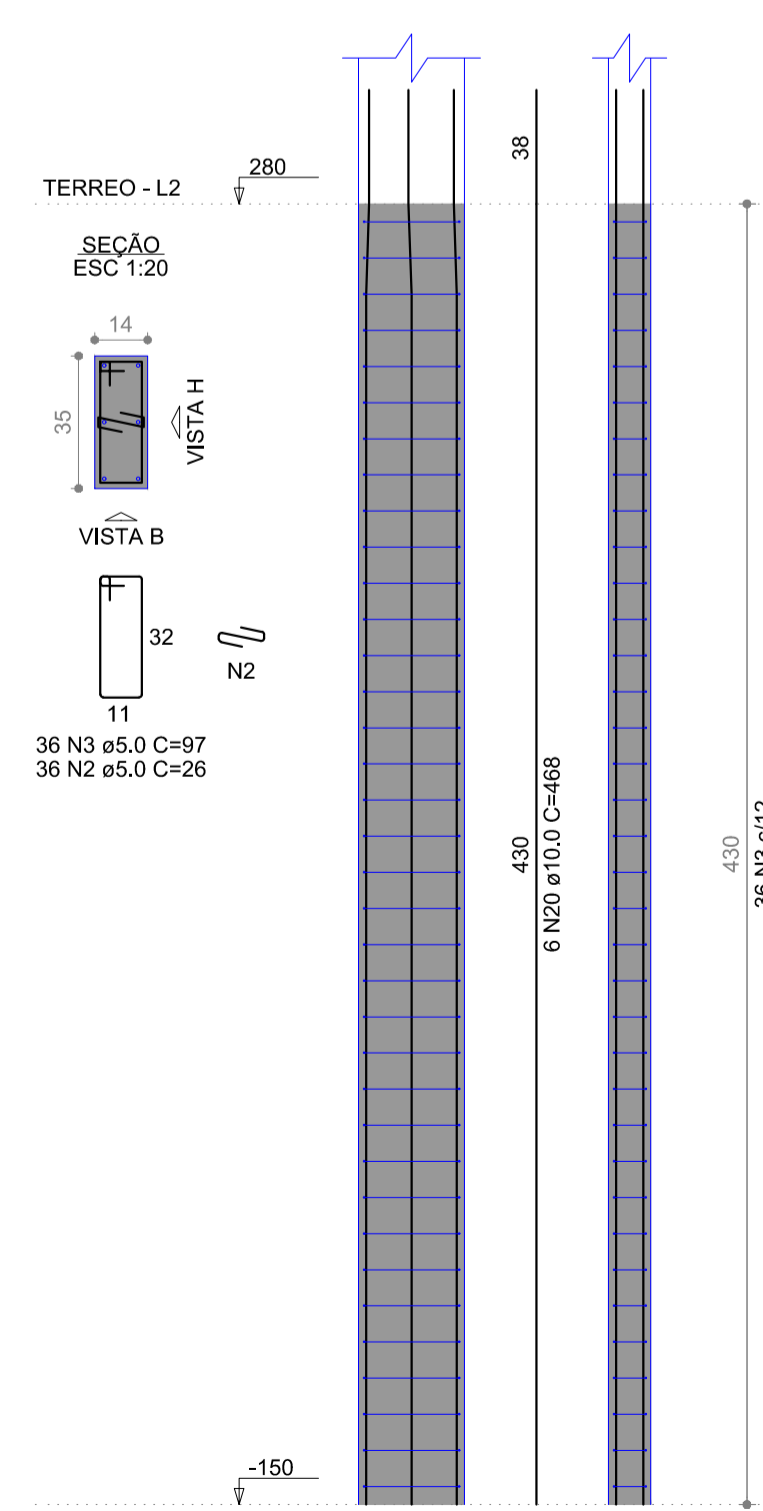
P21



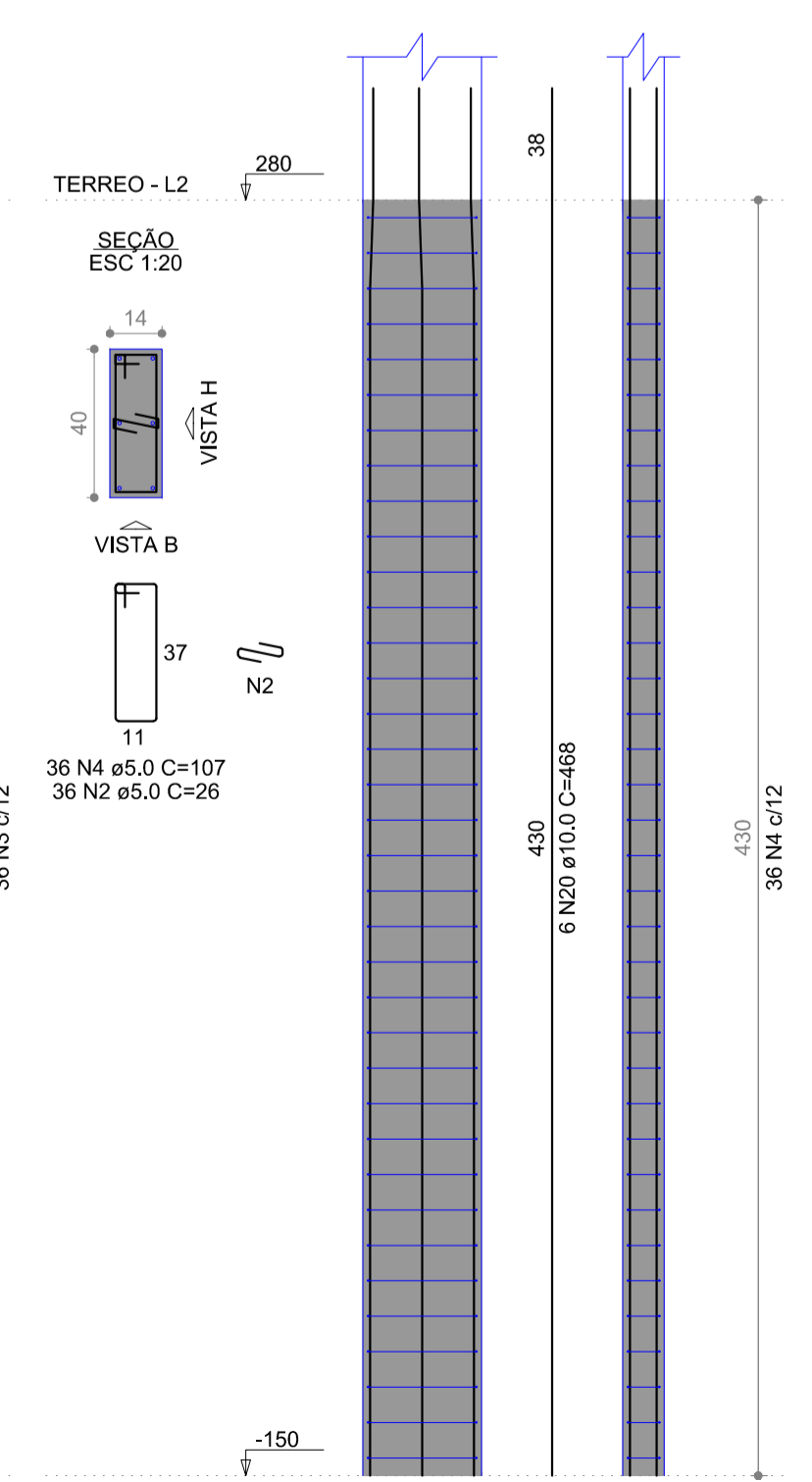
VISTA B
ESC 1:25



P24=P25



P27



PROJETO ESTRUTURAL

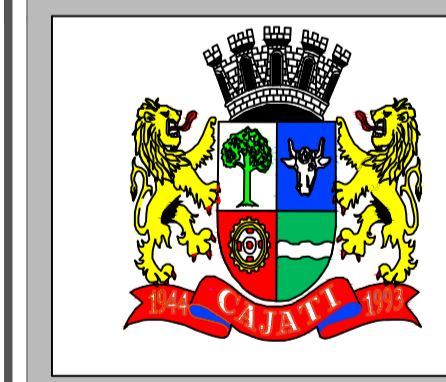
FL.:
04/11

OBRA: AMPLIAÇÃO DE UNIDADE BÁSICA DE SAÚDE DO BAIRRO BARRA DO AZEITE

LOCAL: RUA JACUPIRANGA, 38 - BARRA DO AZEITE CAJATI - SP

PROP.: PREFEITURA MUNICIPAL DE CAJATI 64.037.815/0001-28

ESCALAS: INDICADAS



PLANTA DE SITUAÇÃO S/ ESCALA



DECLARO QUE A APROVAÇÃO DO PROJETO POR PARTE DA PREFEITURA NÃO IMPLICA NO RECONHECIMENTO DO DIREITO DE PROPRIEDADE DO TERRENO.

PROPRIETÁRIO

ÁREAS (UN. M²)

ÁREA DO TERRENO : 326.72 m²
ÁREA A SER CONSTRUÍDA : 279.53 m²

AUTOR DO PROJETO
NOME : SILVERIO DOMINGUES
CREA : 506128557

RESP. TÉCNICO - FISCALIZAÇÃO
NOME : SILVERIO DOMINGUES
CREA : 506128557

ESPAÇO RESERVADO P/ APROVAÇÃO