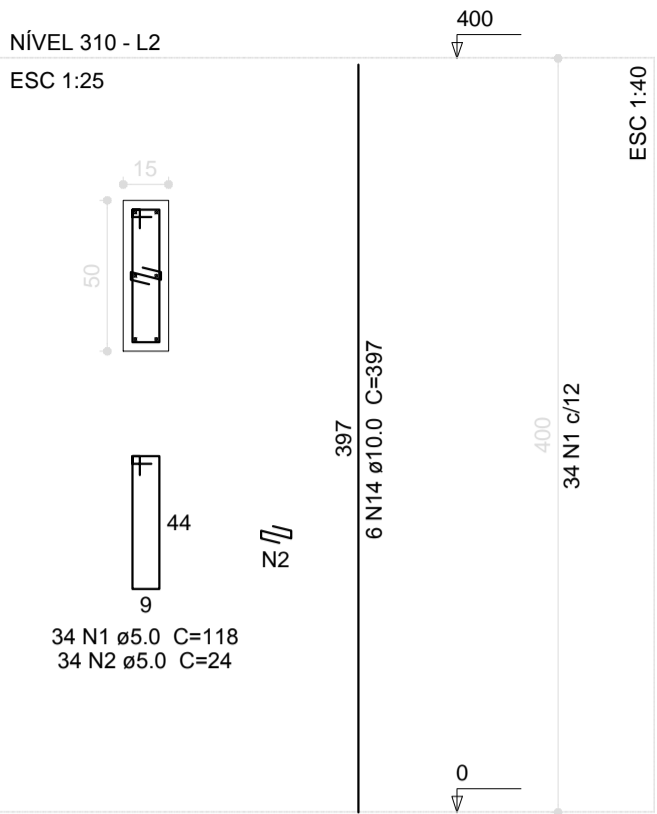
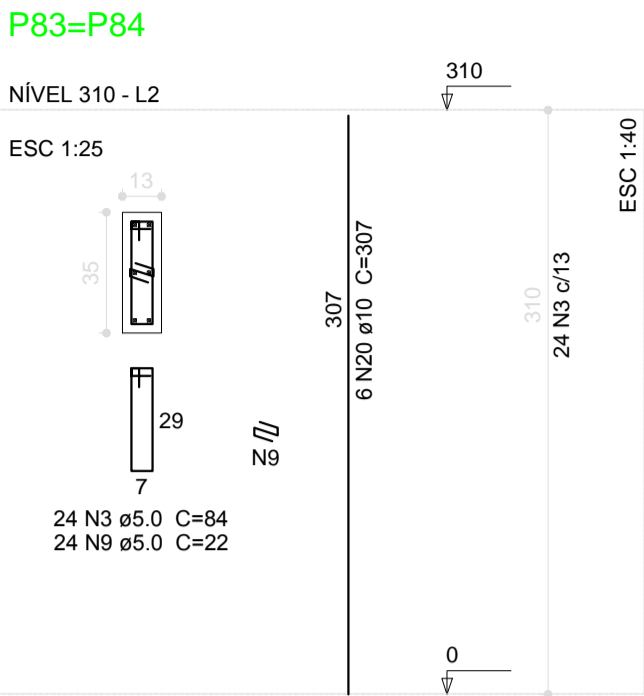
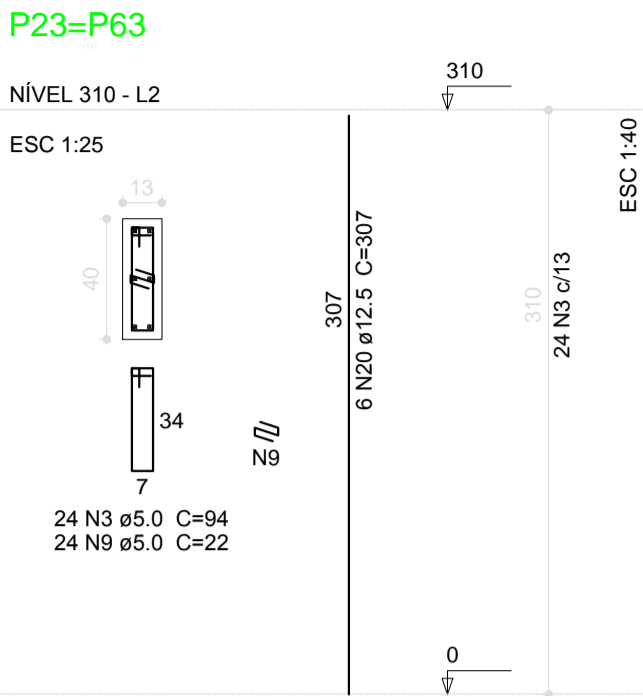
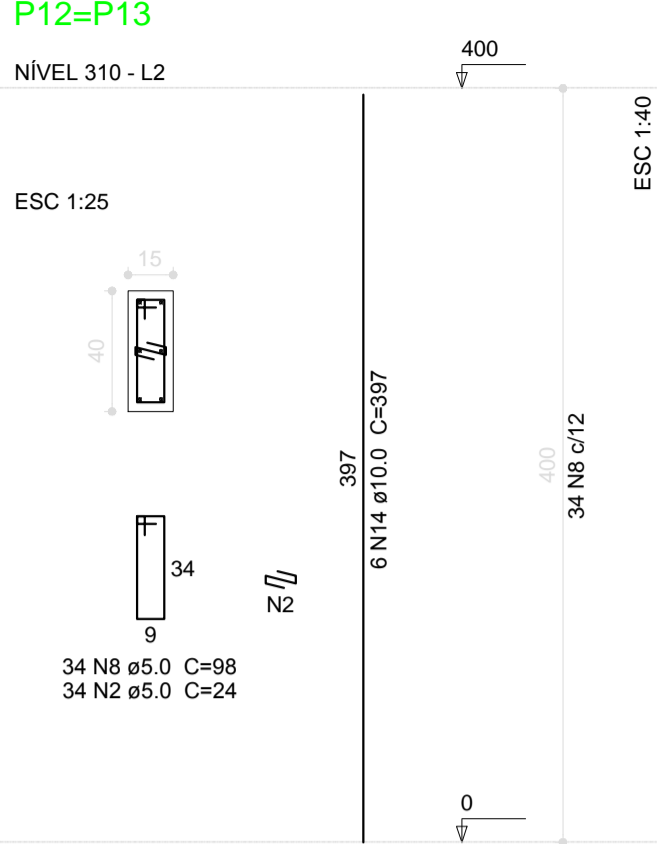
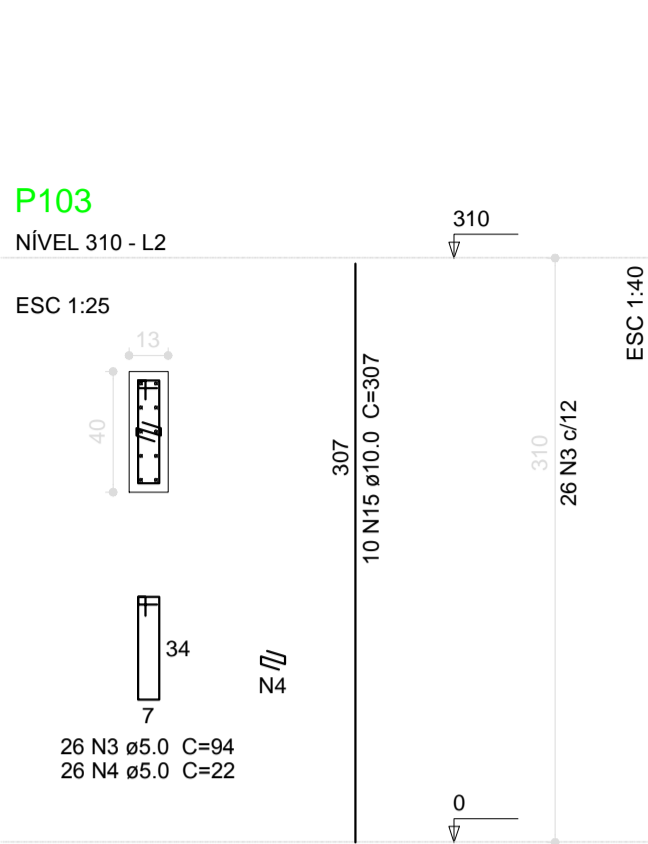
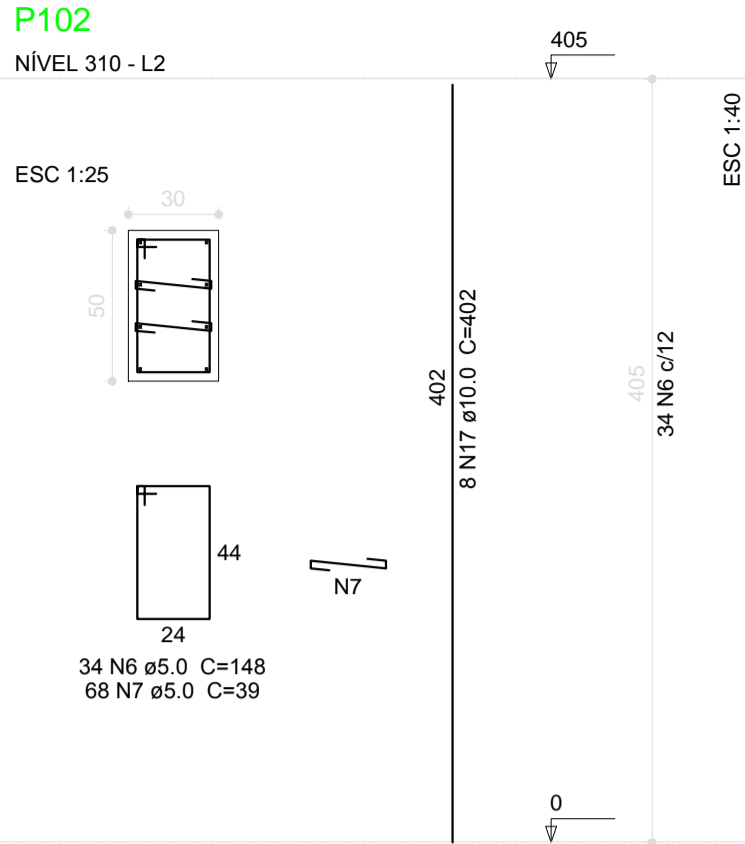
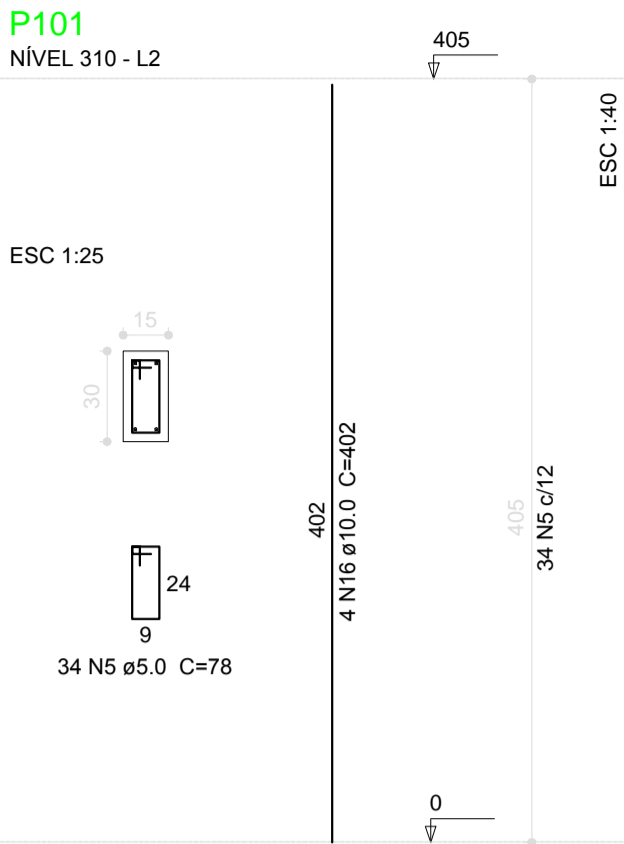
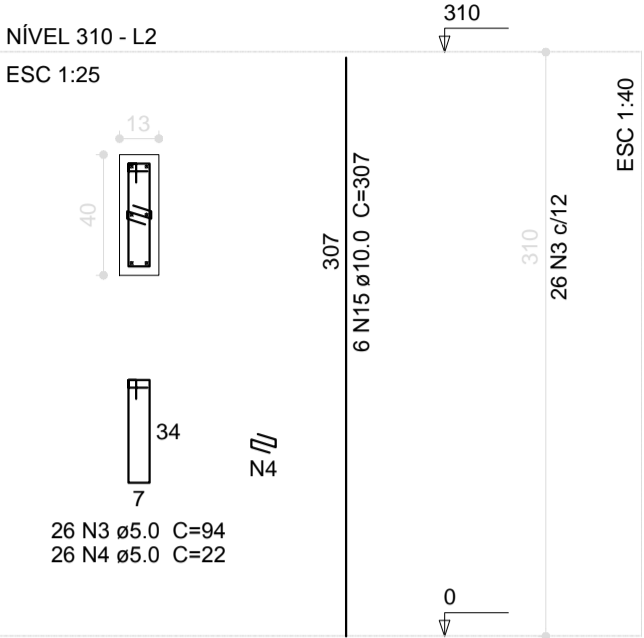


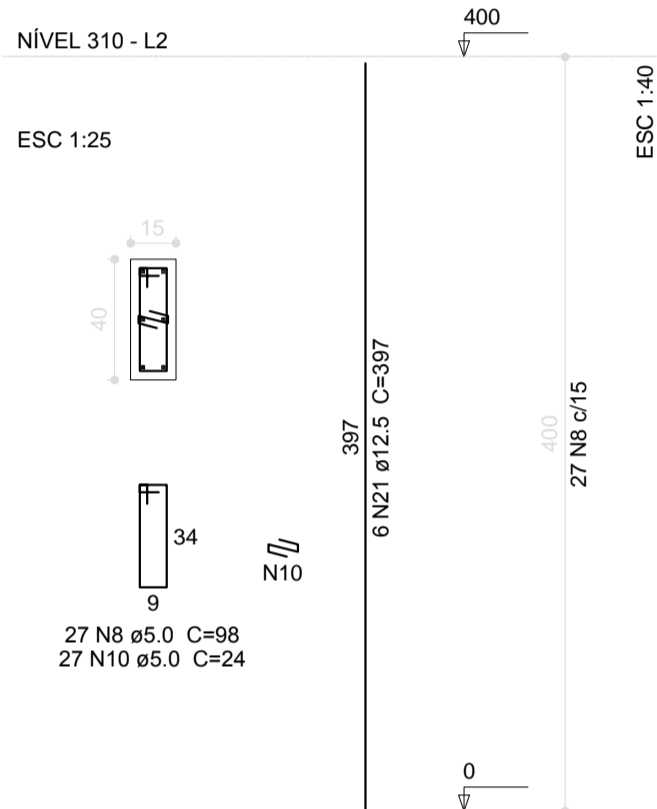
P1=P2=P3=P4=P5=P6=P7=P8=P41=P42=P43=P44
=P45=P46=P47=P48=P49=P50=P51=P52=P53
=P54=P55=P56=P107=P108=P109=P110=P111
=P112=P113=P114



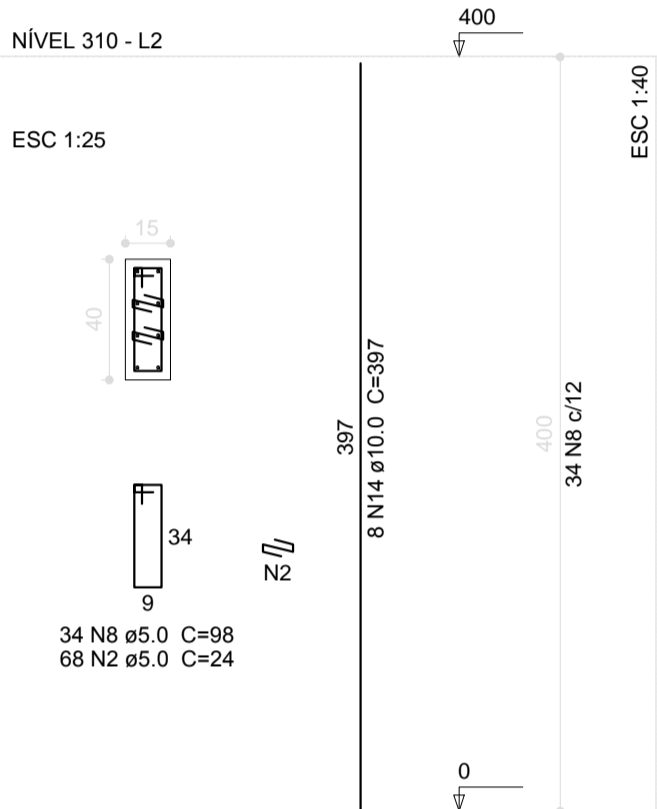
P10=P11=P14=P15=P18=P19=P20=P21=P22=P26
=P27=P28=P30=P31=P34=P35=P38=P39=P64
=P65=P71=P74=P75=P79=P80=P82=P87=P88
=P104=P105



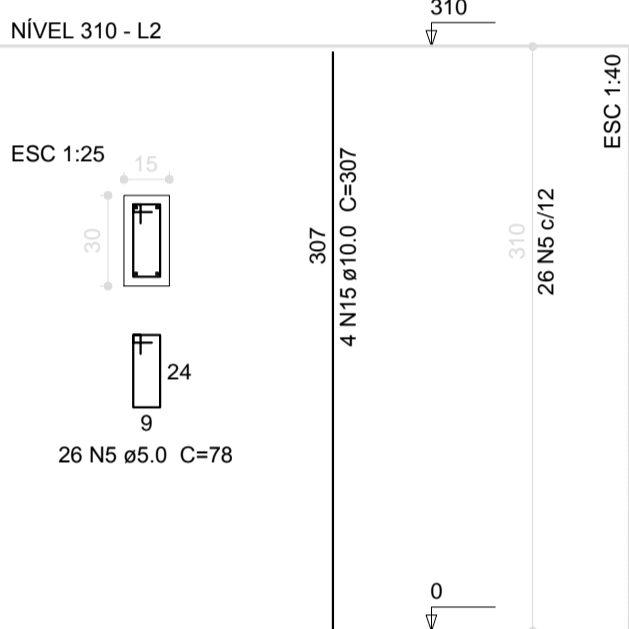
P33=P36



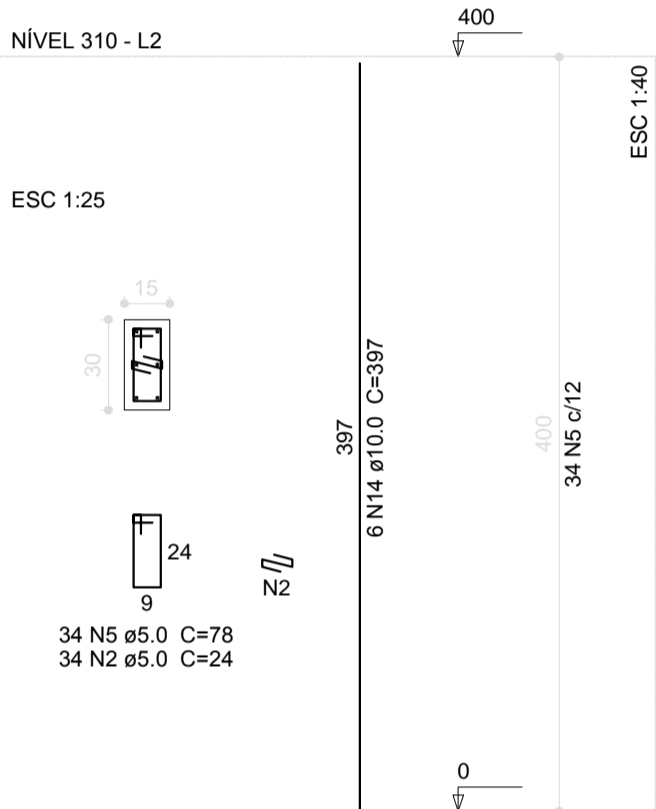
P37=P60



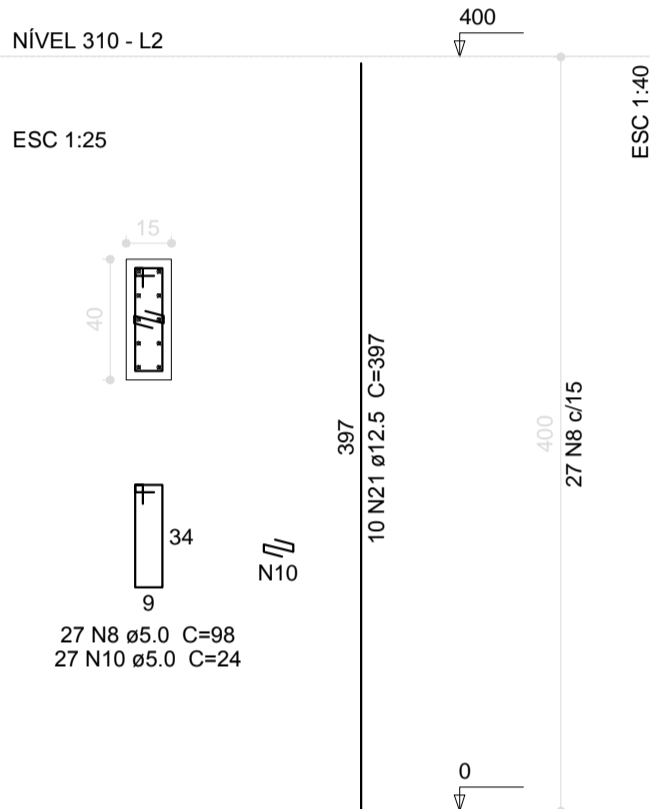
P58=P59



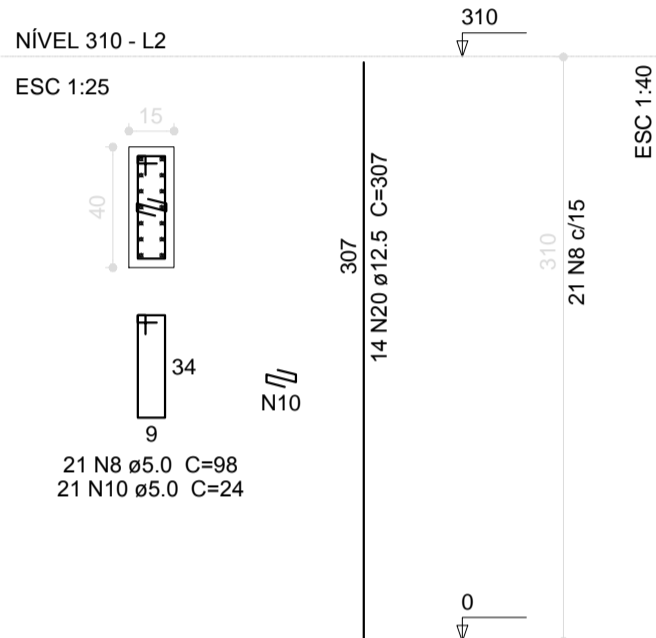
P61



P62=P97

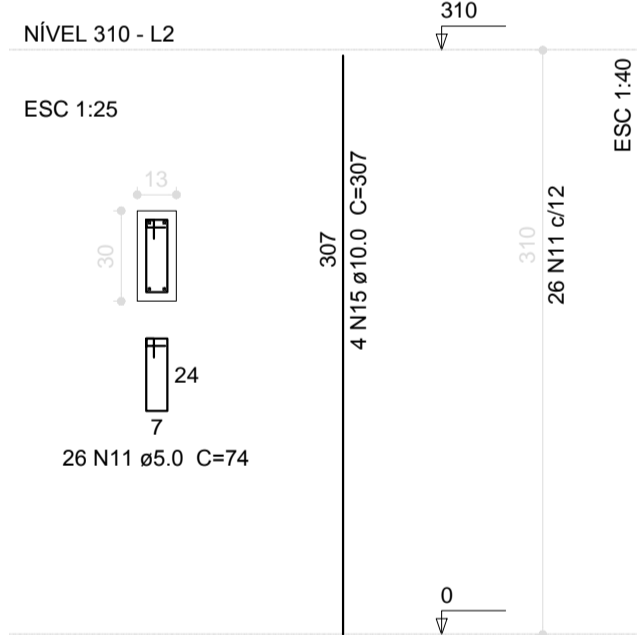


P67

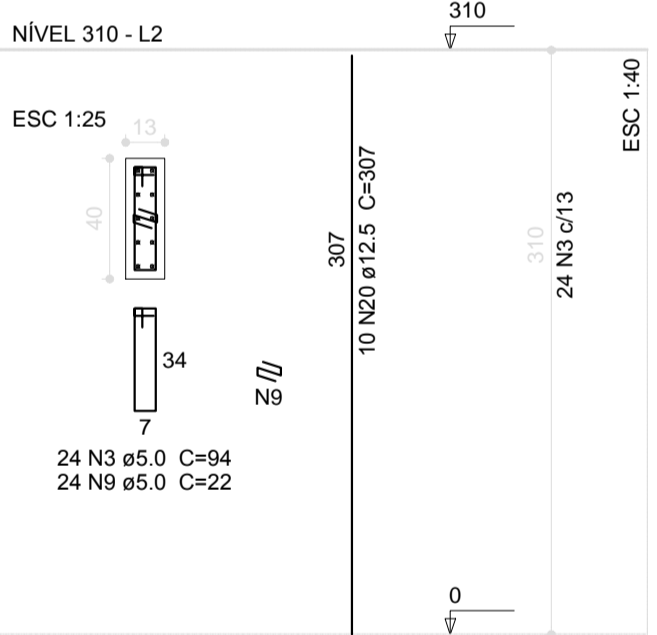


Resumo do aço			
AÇO	DIAM (mm)	C.TOTAL (m)	PESO + 10 % (kg)
CA50	10.0	1880.1	1276.0
CA60	12.5	627.4	664.6
CA60	5.0	4157.4	704.3
PESO TOTAL (kg)			
CA50	1940.6		
CA60	704.3		
Volume de concreto (C-25) = 25.70 m³			
Área de forma = 488.3 m²			

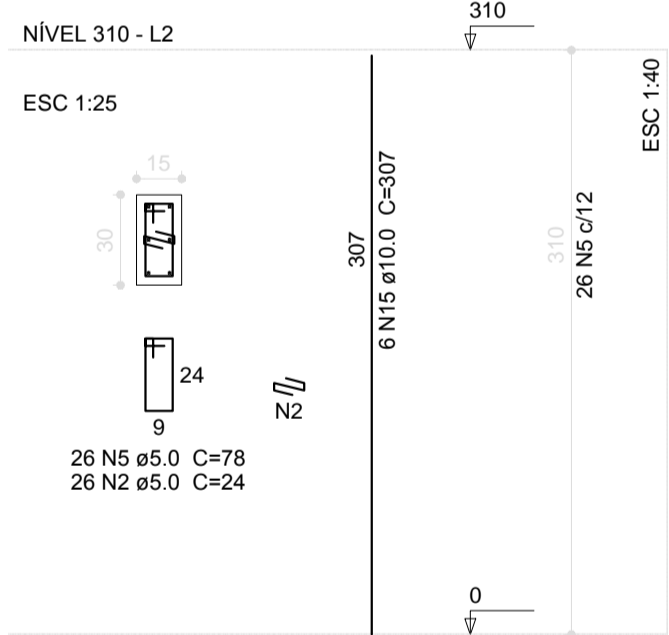
P69=P77=P81=P90=P92=P93=P94=P100



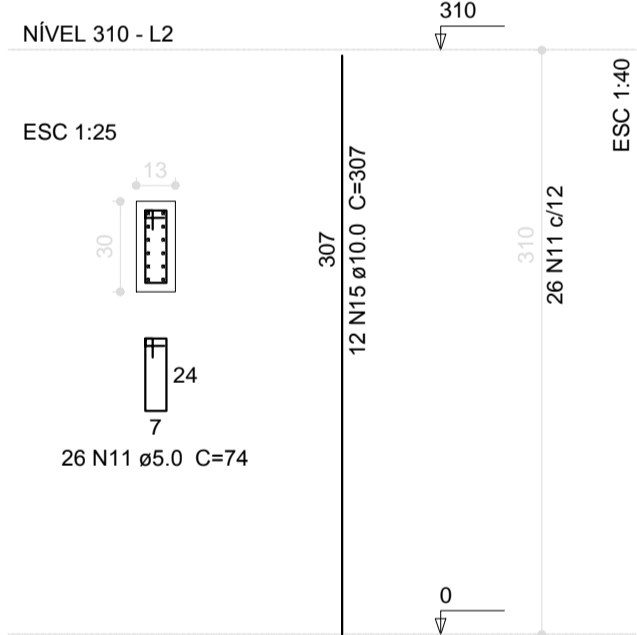
P73



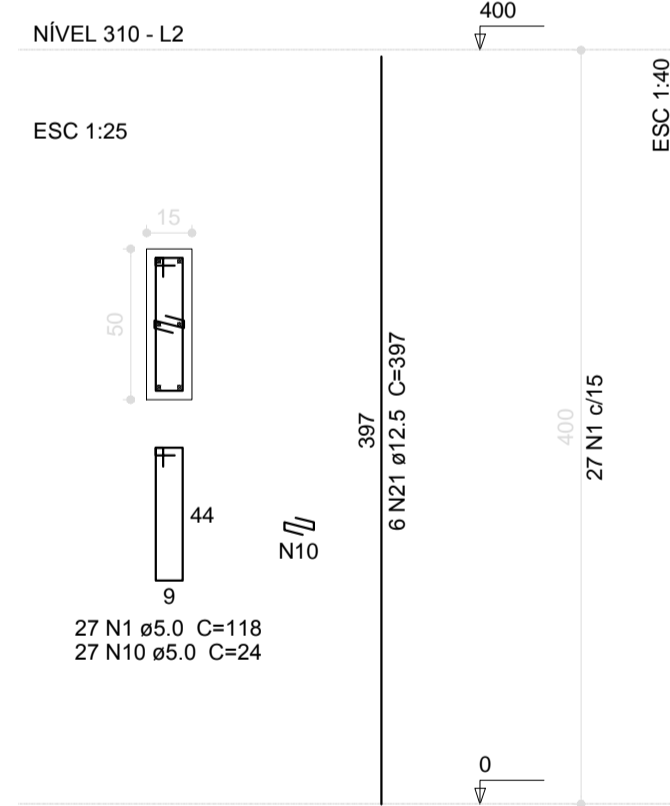
P85



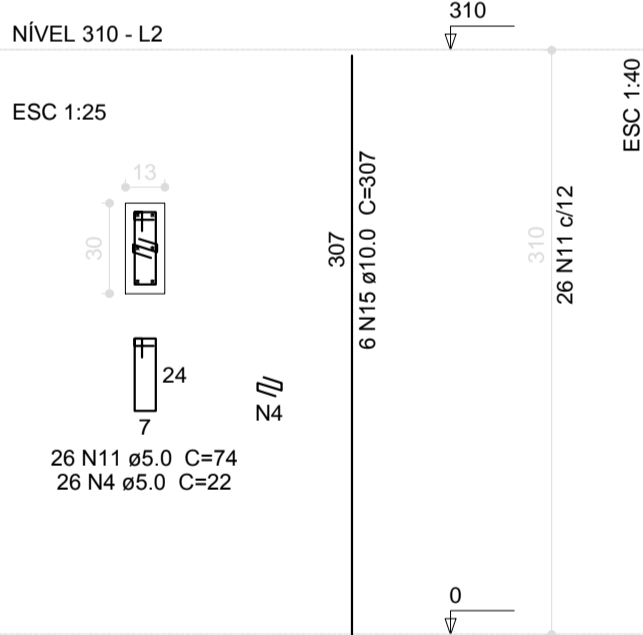
P86



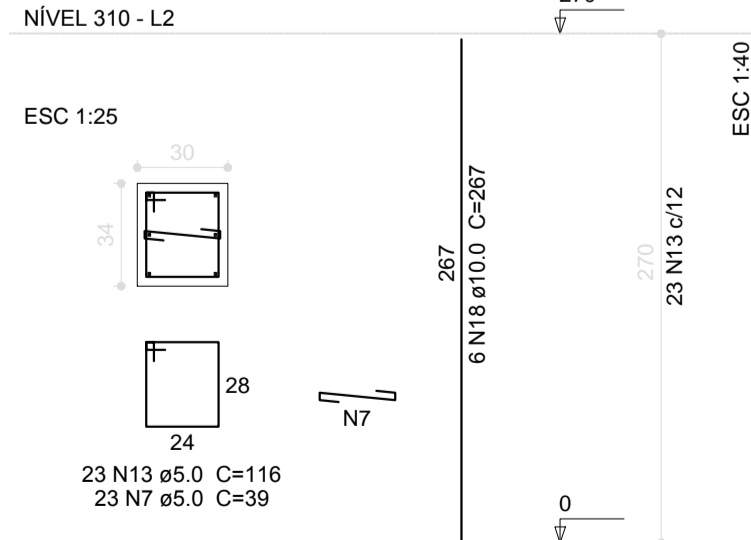
P9=P16=P17=P40=P57=P66=P68=P76=P89=P106



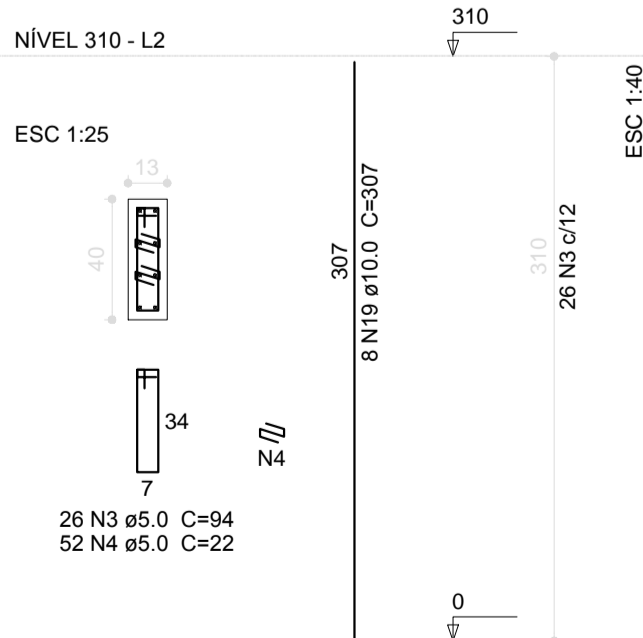
P91=P99



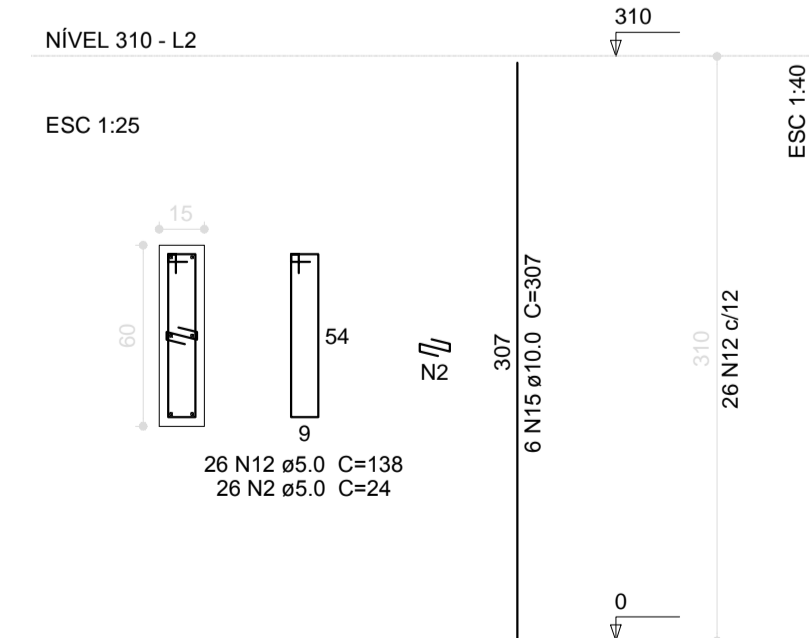
P95=P96



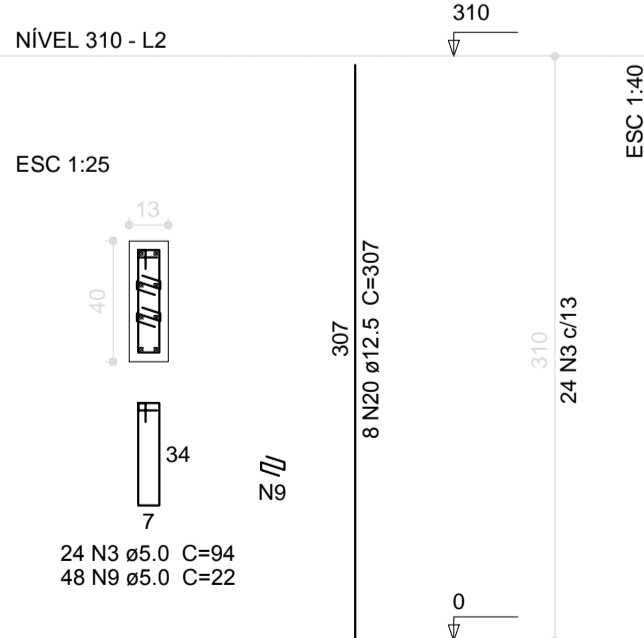
P98



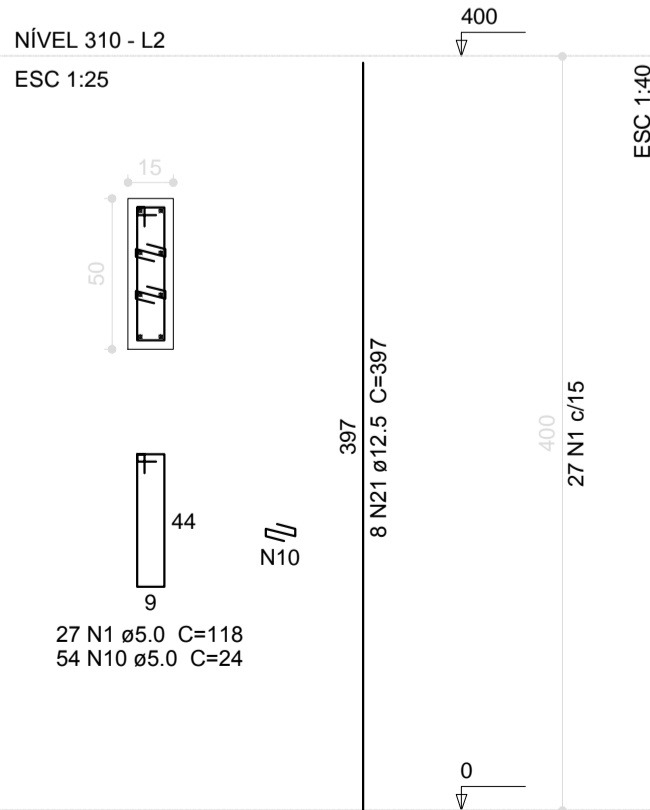
P70



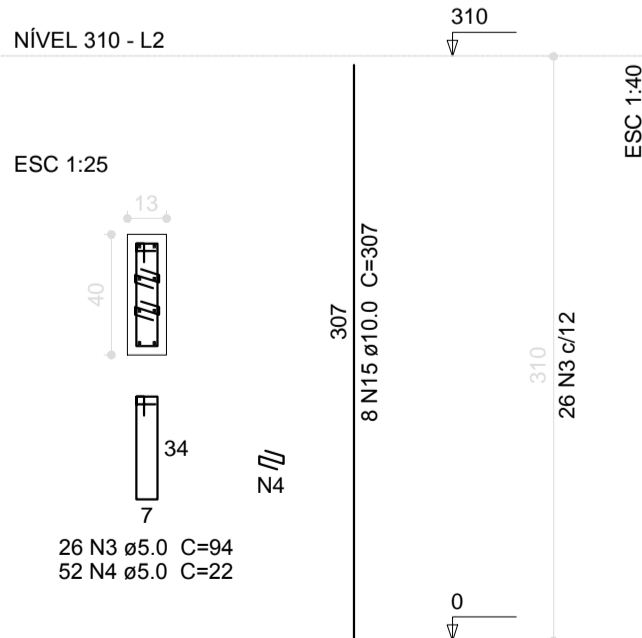
P72



P24=P25=P32=P78



P29



CONSTRUÇÃO DE ESCOLA NO B. CAPITÃO BRAS

PROPRIETÁRIO: : PREFEITURA MUNICIPAL DE CAJATI-SP
ENDEREÇO: RUA JOÃO PEREIRA S/N – BAIRRO CAPITÃO BRAS
MUNICÍPIO – UF: CAJATI-SP
PROPRIETÁRIO
RESP. TÉCNICO CREA
AUTOR DO PROJETO CAU

DLFO CREA
RA

OBSERVAÇÕES:

PROJETO DE ESTRUTURA

COORDENAÇÃO			
ESTRUTURA DE CONCRETO PILARES NÍVEL 000 FORMA E ARMAÇÃO			
REVISÃO	ESCALA	PRINCHA	
DESENHO	ESCALA		
	DATA EMISSÃO		
	DATA		